

BLUE LAKE TOWNHOMES

A REPLAT OF ALL OF BLUE LAKE RESIDENTIAL, RECORDED IN PLAT BOOK 109,
PAGES 135 THROUGH 144, OF THE PUBLIC RECORDS OF PALM BEACH COUNTY, FLORIDA
LYING IN SECTION 12, TOWNSHIP 47 SOUTH, RANGE 42 EAST
CITY OF BOCA RATON, PALM BEACH COUNTY, FLORIDA.

SHEET 7 OF 10

PLAT BOOK 113
PAGE 161



GRAPHIC SCALE IN FEET
1" = 20'

RECORD PLAT PREPARED BY:



Sun-Tech Engineering, Inc.
Engineers - Planners - Surveyors
Certificate of Authorization Number LB 7019

1600 West Oakland Park Boulevard
Ft. Lauderdale, FL 33311
E-Mail: suntech@suntecheng.com

Phone (954) 777-3123
Fax (954) 777-3114

STATE OF FLORIDA }
COUNTY OF PALM BEACH } SS
THIS PLAT WAS FILED FOR RECORD
AT _____ THIS _____
DAY OF _____, 2011, AND DULY
RECORDED IN PLAT BOOK _____
ON PAGES _____ THROUGH _____

SHARON BOCK
CLERK & COMPTROLLER
BY: _____

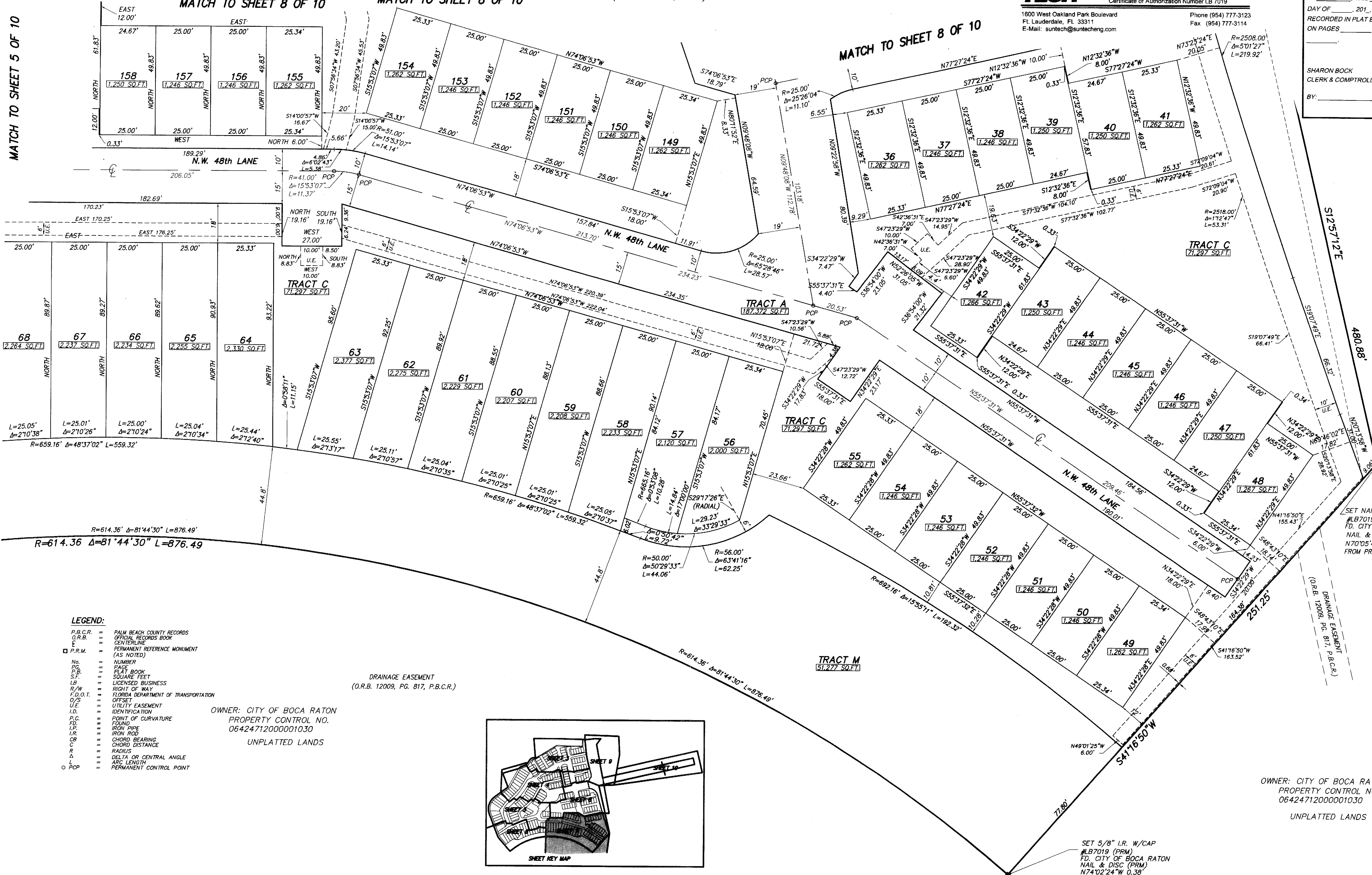
MATCH TO SHEET 5 OF 10

MATCH TO SHEET 8 OF 10

MATCH TO SHEET 8 OF 10

(FEBRUARY, 2010)

MATCH TO SHEET 8 OF 10

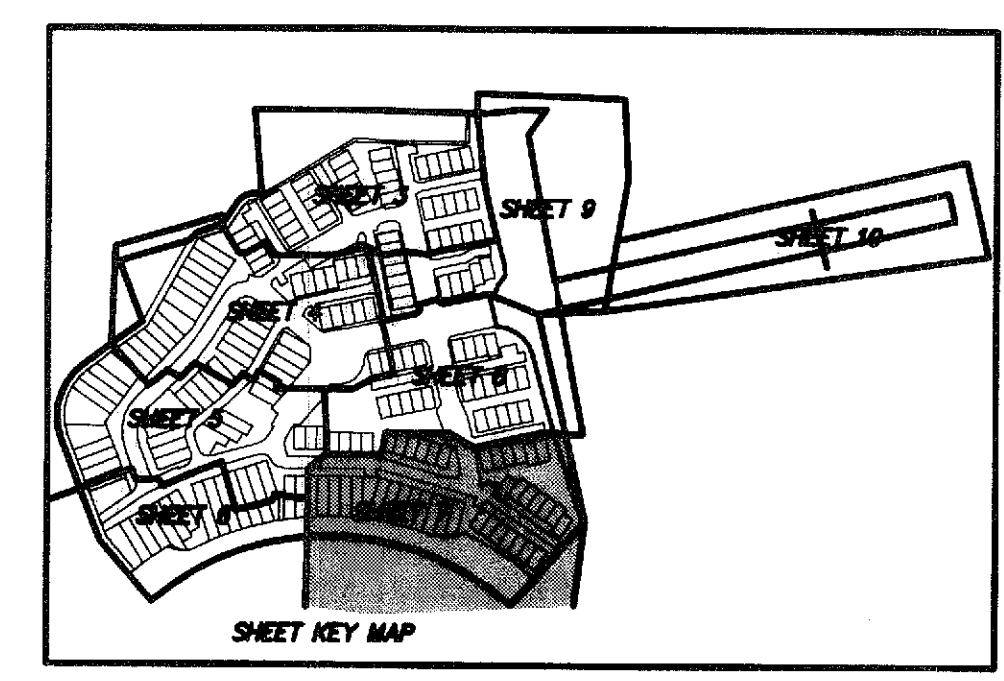


LEGEND:

- P.B.C.R. = PALM BEACH COUNTY RECORDS
- O.R.B. = OFFICIAL RECORDS BOOK
- C = CENTERLINE
- P.R.M. = PERMANENT REFERENCE MONUMENT (AS NOTED)
- No. = NUMBER
- P.G. = PAGE
- P.B. = PLAT BOOK
- S.F. = SQUARE FEET
- LB = LICENSED BUSINESS
- R/W = RIGHT OF WAY
- F.D.O.T. = FLORIDA DEPARTMENT OF TRANSPORTATION
- O/S = OFFSET
- U.E. = UTILITY EASEMENT
- I.D. = IDENTIFICATION
- P.C. = POINT OF CURVATURE
- FD. = FOUND
- I.P. = IRON PIPE
- I.R. = IRON ROD
- CB = CHORD BEARING
- R = RADIUS
- Δ = DELTA OR CENTRAL ANGLE
- L = ARC LENGTH
- PCP = PERMANENT CONTROL POINT

DRAINAGE EASEMENT
(O.R.B. 12009, PG. 817, P.B.C.R.)

OWNER: CITY OF BOCA RATON
PROPERTY CONTROL NO.
06424712000001030
UNPLATTED LANDS



SET NAIL & DISC
#LB7019 (PRM)
FD. CITY OF BOCA RATON
NAIL & DISC (PRM)
N74°02'24"W 0.36'
FROM PROPERTY CORNER

OWNER: CITY OF BOCA RATON
PROPERTY CONTROL NO.
06424712000001030
UNPLATTED LANDS

SET 5/8" I.R. W/CAP
#LB7019 (PRM)
FD. CITY OF BOCA RATON
NAIL & DISC (PRM)
N74°02'24"W 0.36'
FROM PROPERTY CORNER